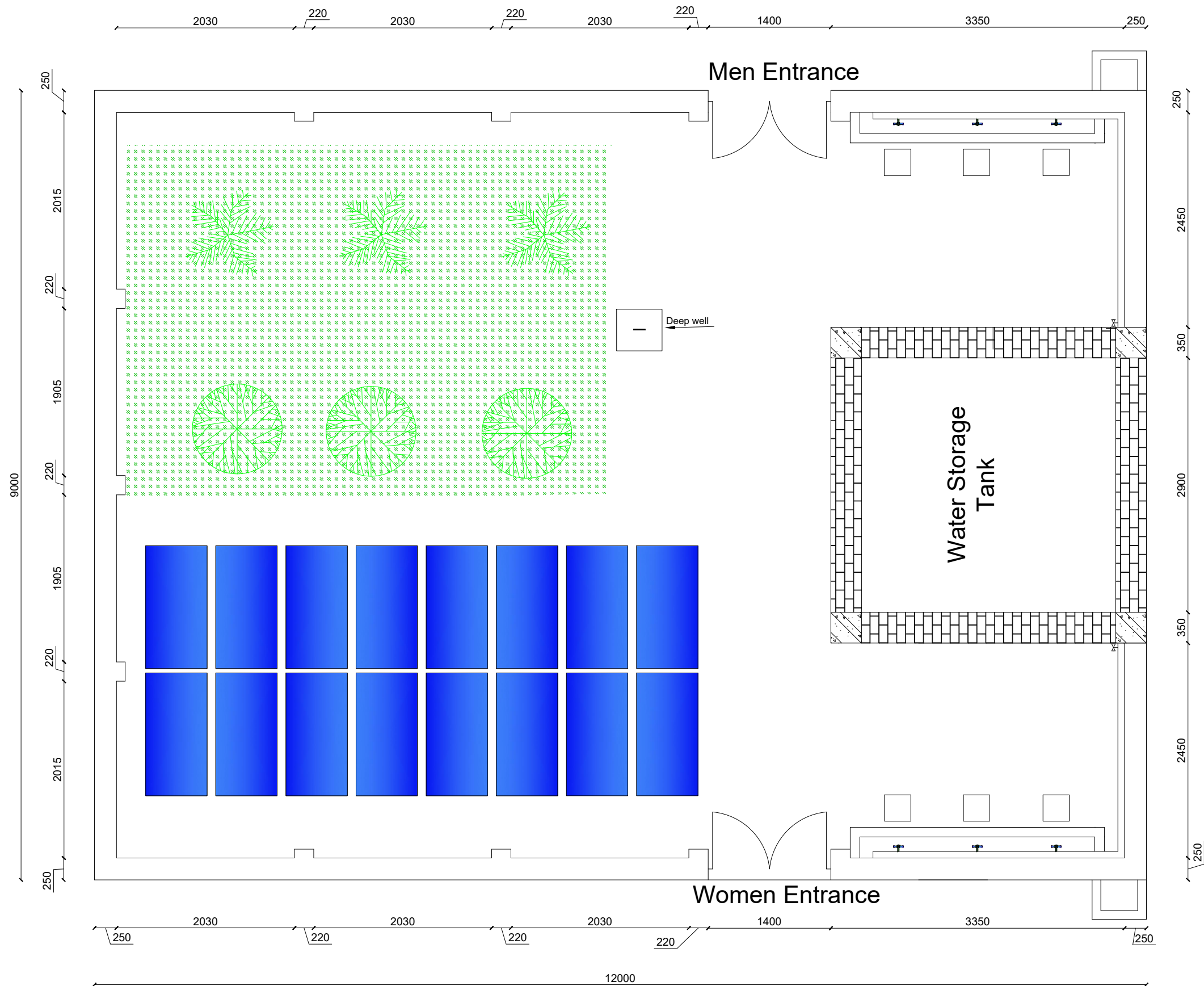


General Plan



Organization for Research
and Community
Development Global

| | |
|-------------|------------------------|
| Designed by | Engineering Department |
| REVIEWED BY | Engineering Department |
| APPROVED BY | Engineering Department |

| | |
|-------|-----------|
| SCALE | As Shown |
| DATE | Aug. 2022 |

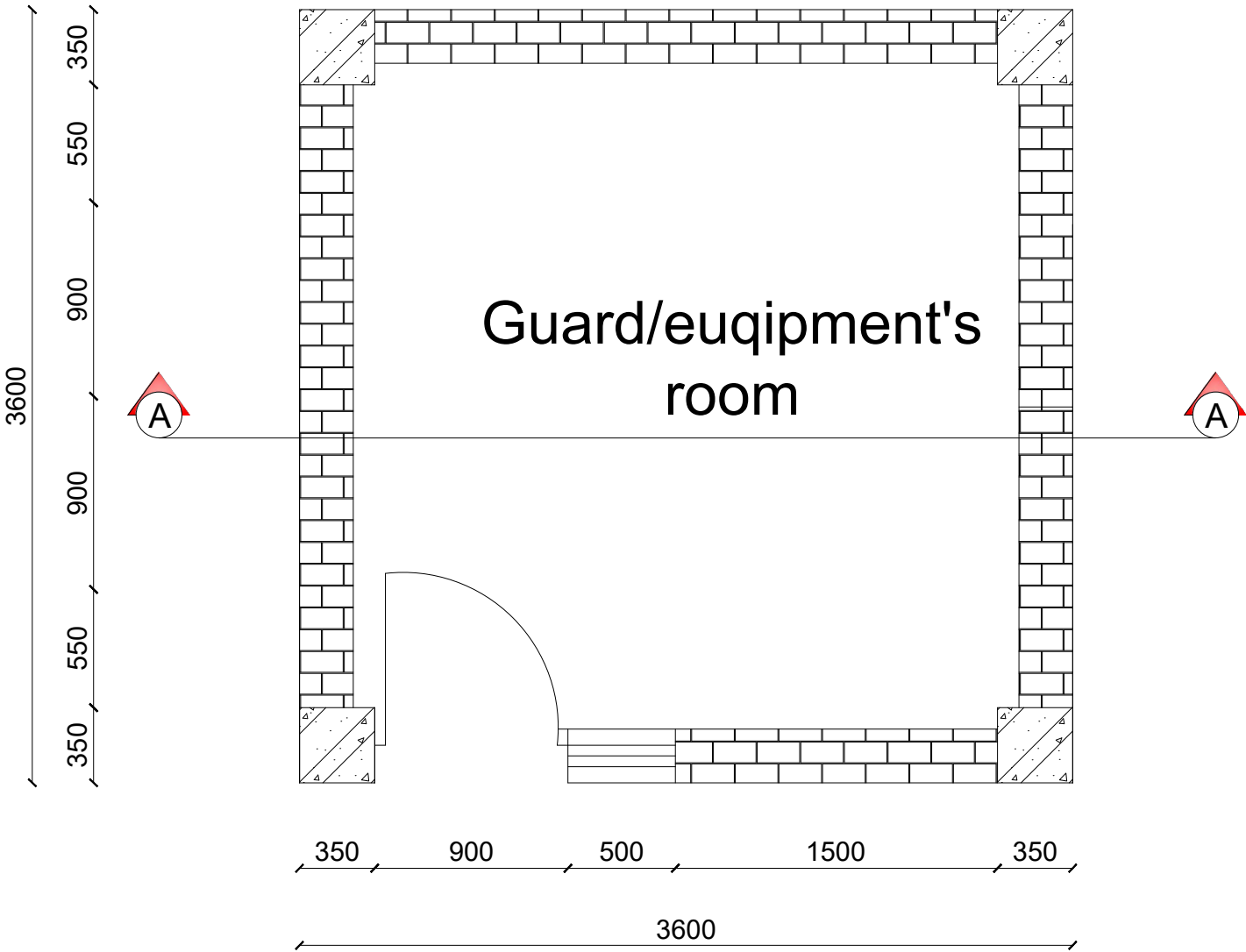
SHEET NO



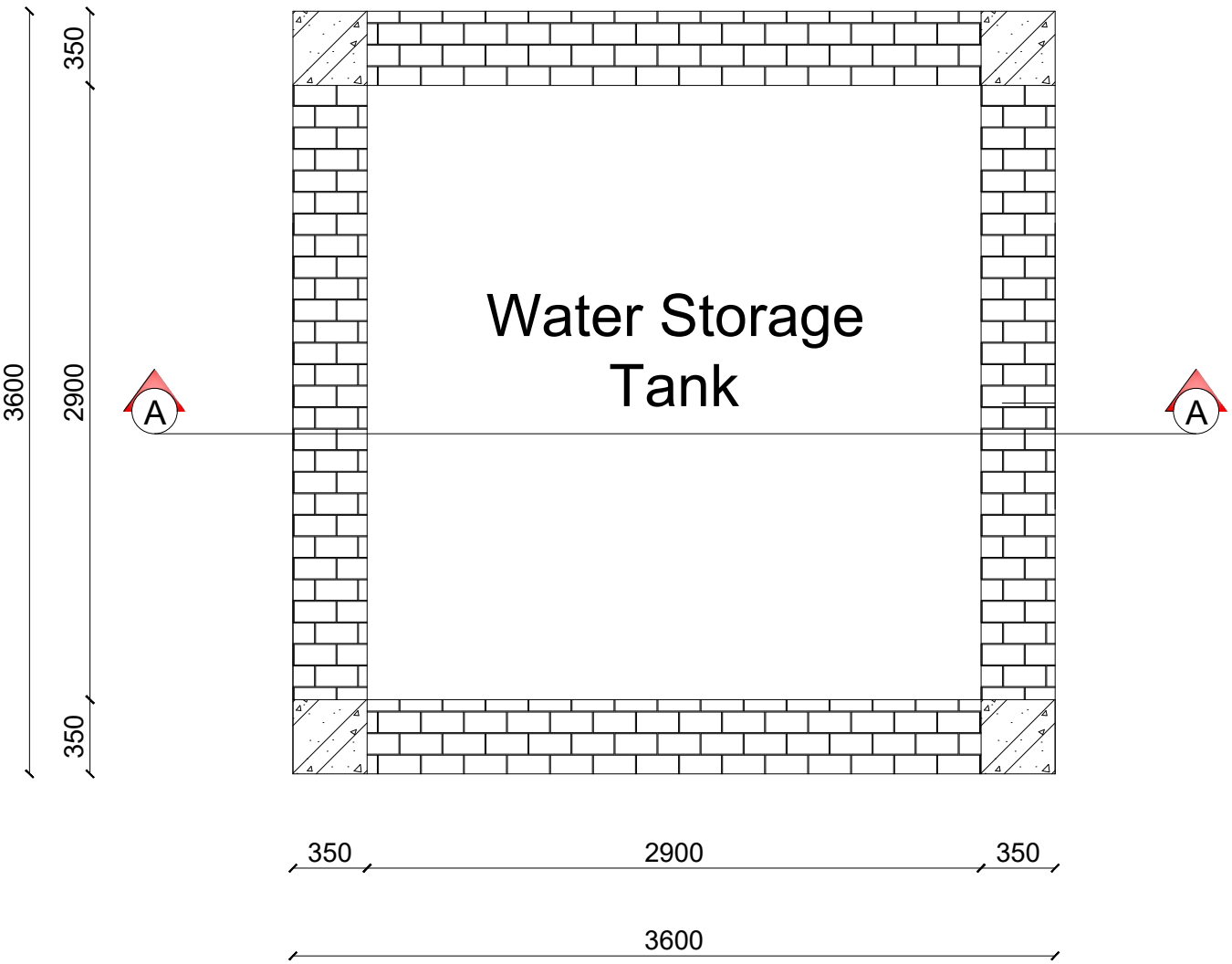
| | |
|----------|--|
| PROVINCE | |
| DISTRICT | |
| VILLAGE | |

PROJECT NAME
17.3 Cubic meter RC Elevated
Water Storage Powered by PV Panels

Ground Floor Plan



1st Floor (water tank) Plan



Organization for Research
and Community
Development Global

| | |
|-------------|------------------------|
| Designed by | Engineering Department |
| REVIEWED BY | Engineering Department |
| APPROVED BY | Engineering Department |

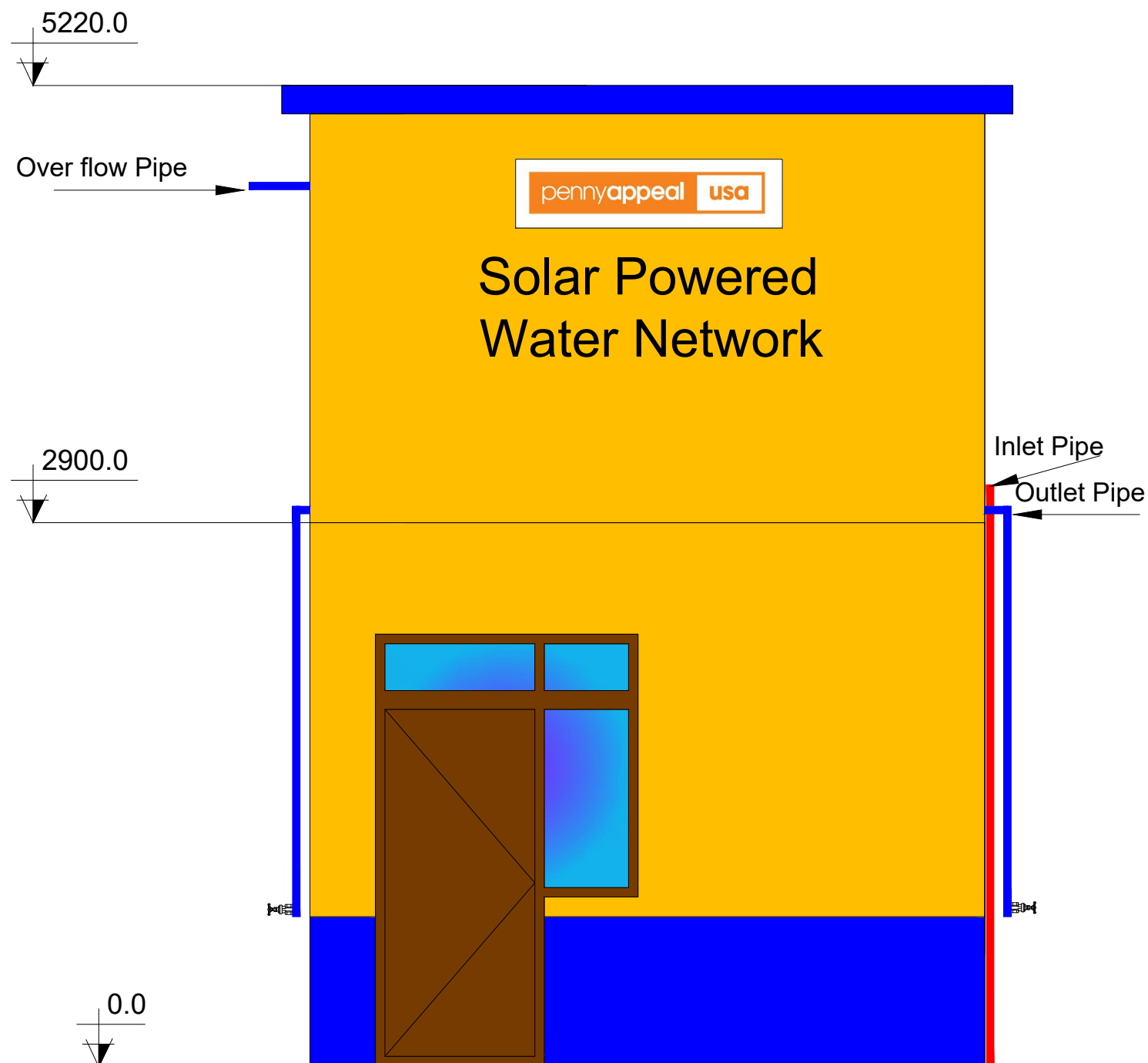
| | |
|-------|-----------|
| SCALE | As Shown |
| DATE | Aug. 2022 |

| | |
|------------|---|
| SHEET NO | 2 |
| PROJECT NO | 8 |

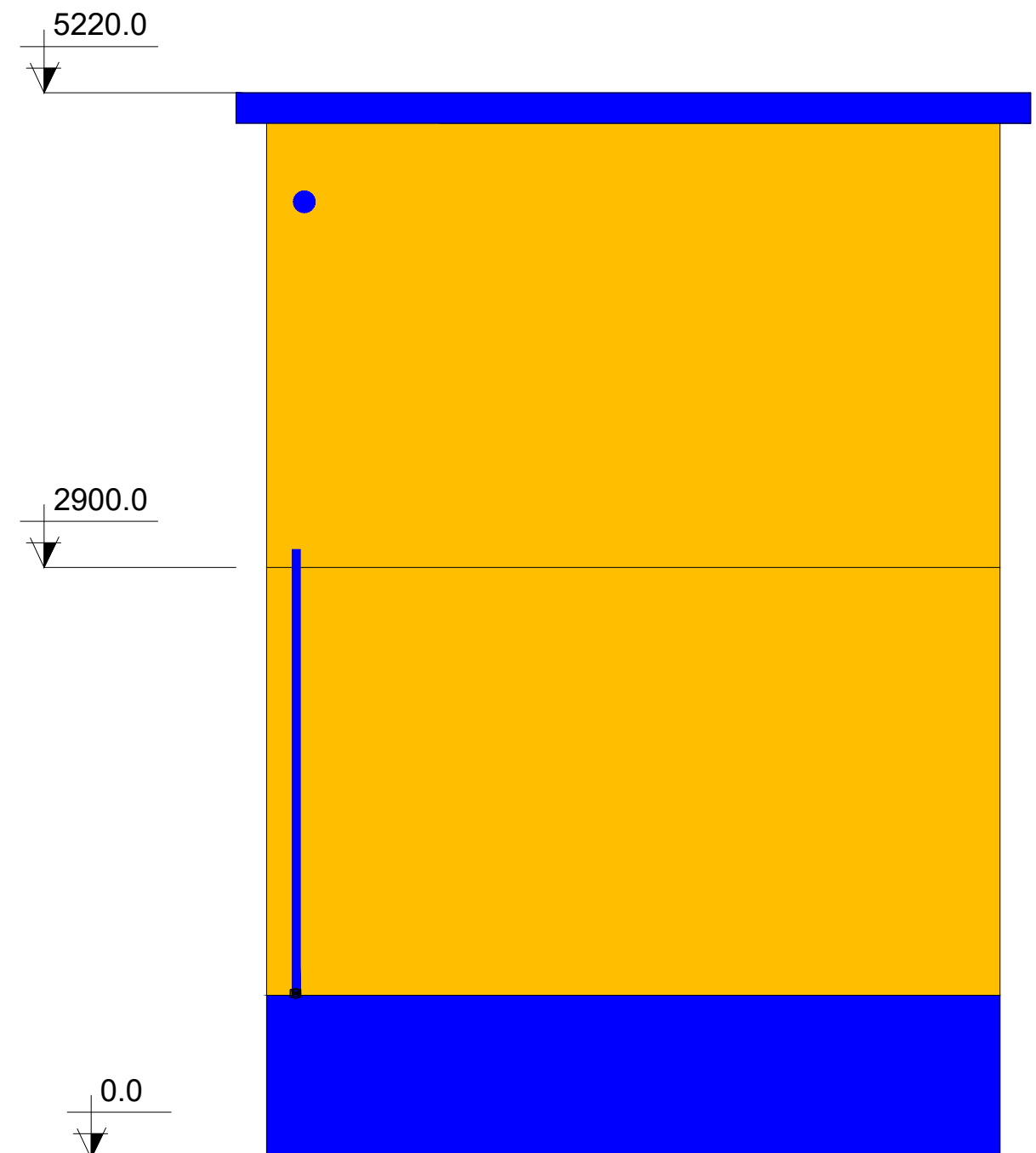
| | |
|----------|--|
| PROVINCE | |
| DISTRICT | |
| VILLAGE | |

PROJECT NAME
17.3 Cubic meter RC Elevated
Water Storage Powered by PV Panels

Front Elevation



Right side Elevation



Organization for Research
and Community
Development Global

| | |
|-------------|------------------------|
| Designed by | Engineering Department |
| REVIEWED BY | Engineering Department |
| APPROVED BY | Engineering Department |

| | |
|-------|-----------|
| SCALE | As Shown |
| DATE | Aug. 2022 |

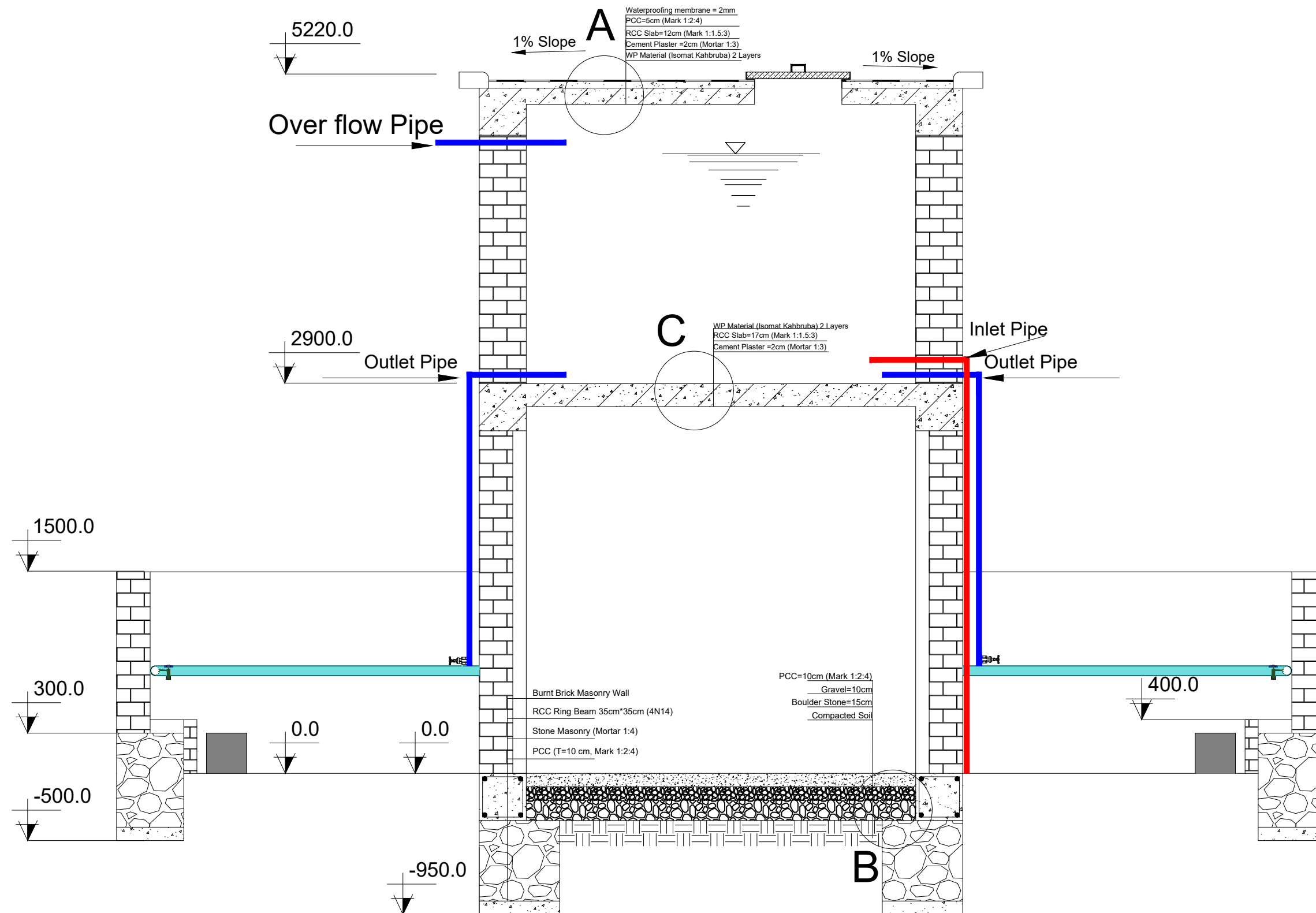


| | |
|----------|--|
| PROVINCE | |
| DISTRICT | |
| VILLAGE | |

PROJECT NAME

17.3 Cubic meter RC Elevated
Water Storage Powered by PV Panels

Section A-A



Organization for Research
and Community
Development Global

| | |
|-------------|------------------------|
| Designed by | Engineering Department |
| REVIEWED BY | Engineering Department |
| APPROVED BY | Engineering Department |

| | |
|-------|-----------|
| SCALE | As Shown |
| DATE | Aug. 2022 |

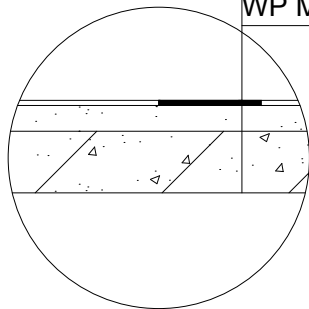
| | |
|----------|---|
| SHEET NO | 4 |
| | 8 |

| | |
|----------|--|
| PROVINCE | |
| DISTRICT | |
| VILLAGE | |

PROJECT NAME
17.3 Cubic meter RC Elevated
Water Storage Powered by PV Panels

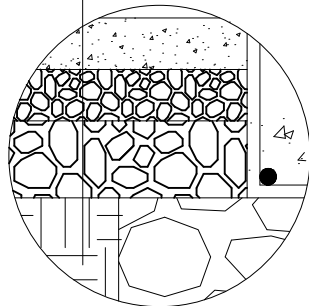
A

Waterproofing membrane = 2mm
PCC=5cm (Mark 1:2:4)
RCC Slab=12cm (Mark 1:1:2)
Cement Plaster =2cm (Mortar 1:3)
WP Material (Isomat Kahbruba) 2 Layers



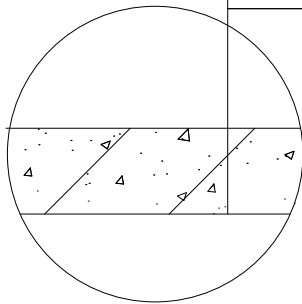
PCC=10cm (Mark 1:2:4)
Gravel=10cm
Boulder Stone=15cm
Compacted Soil

B

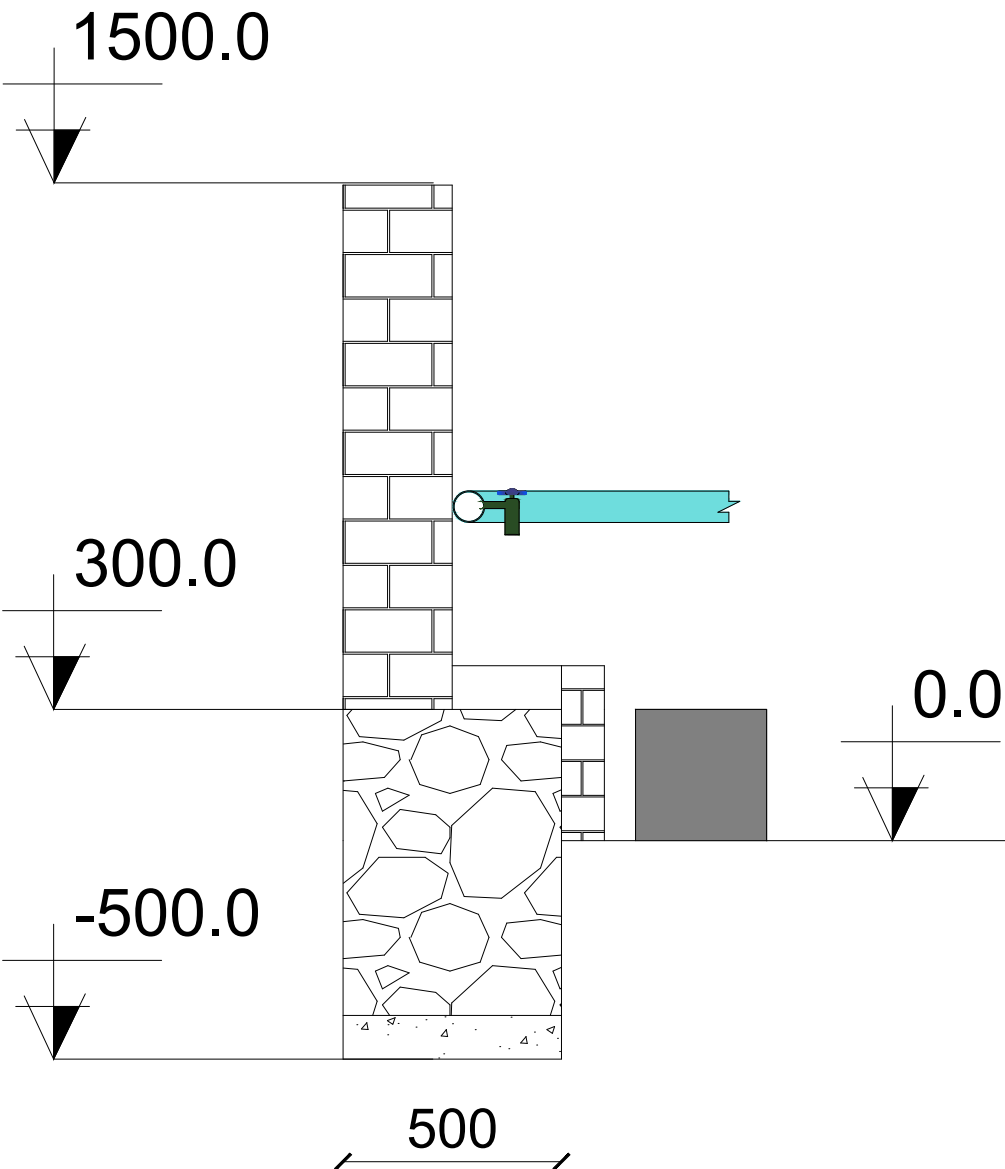
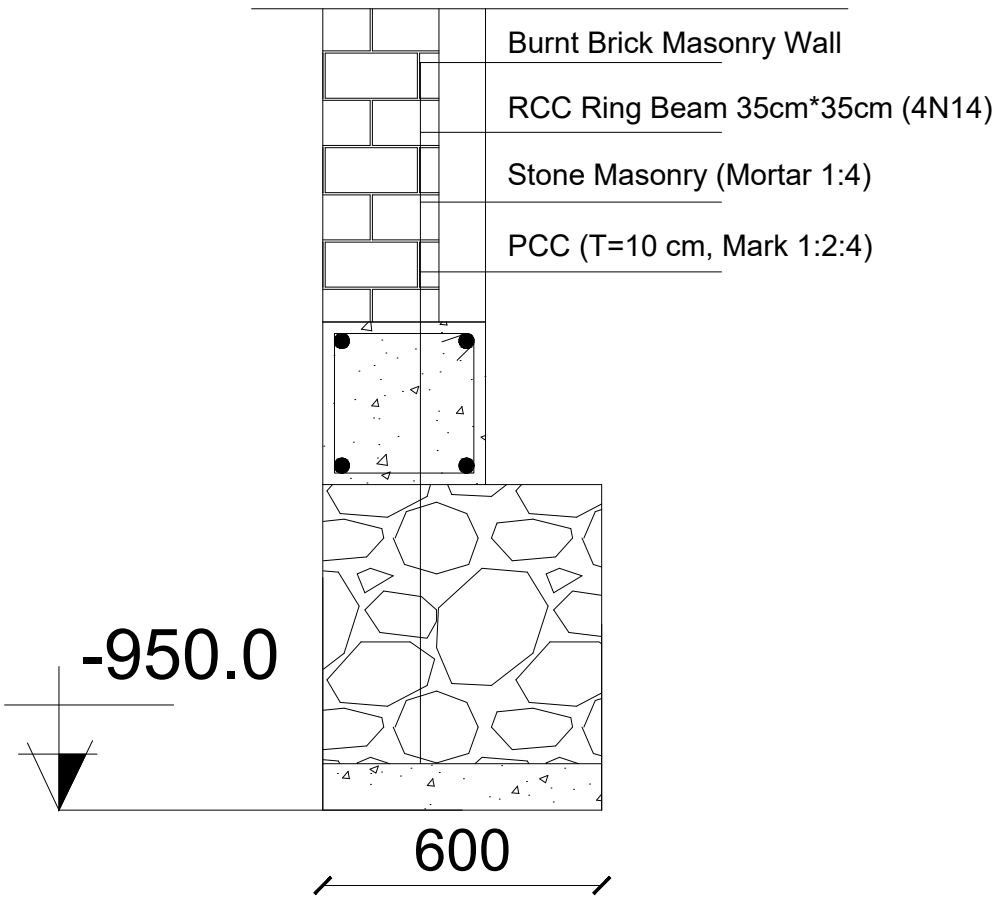


C

WP Material (Isomat Kahbruba) 2 Layers
RCC Slab=17cm (Mark 1:1:2)
Cement Plaster =2cm (Mortar 1:3)



Details



Organization for Research
and Community
Development Global

| | |
|-------------|------------------------|
| Designed by | Engineering Department |
| REVIEWED BY | Engineering Department |
| APPROVED BY | Engineering Department |

| | |
|-------|-----------|
| SCALE | As Shown |
| DATE | Aug. 2022 |

SHEET NO

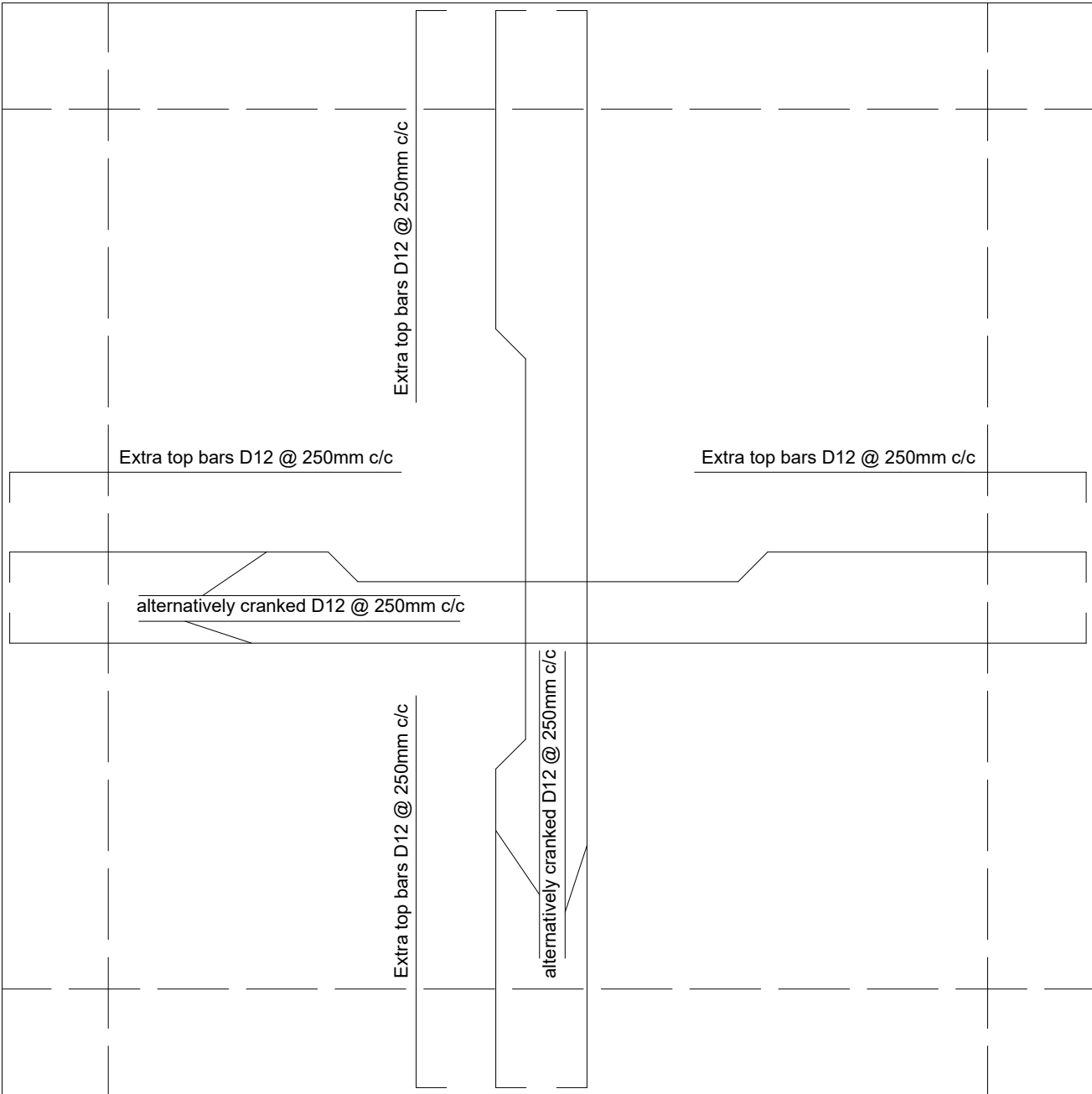
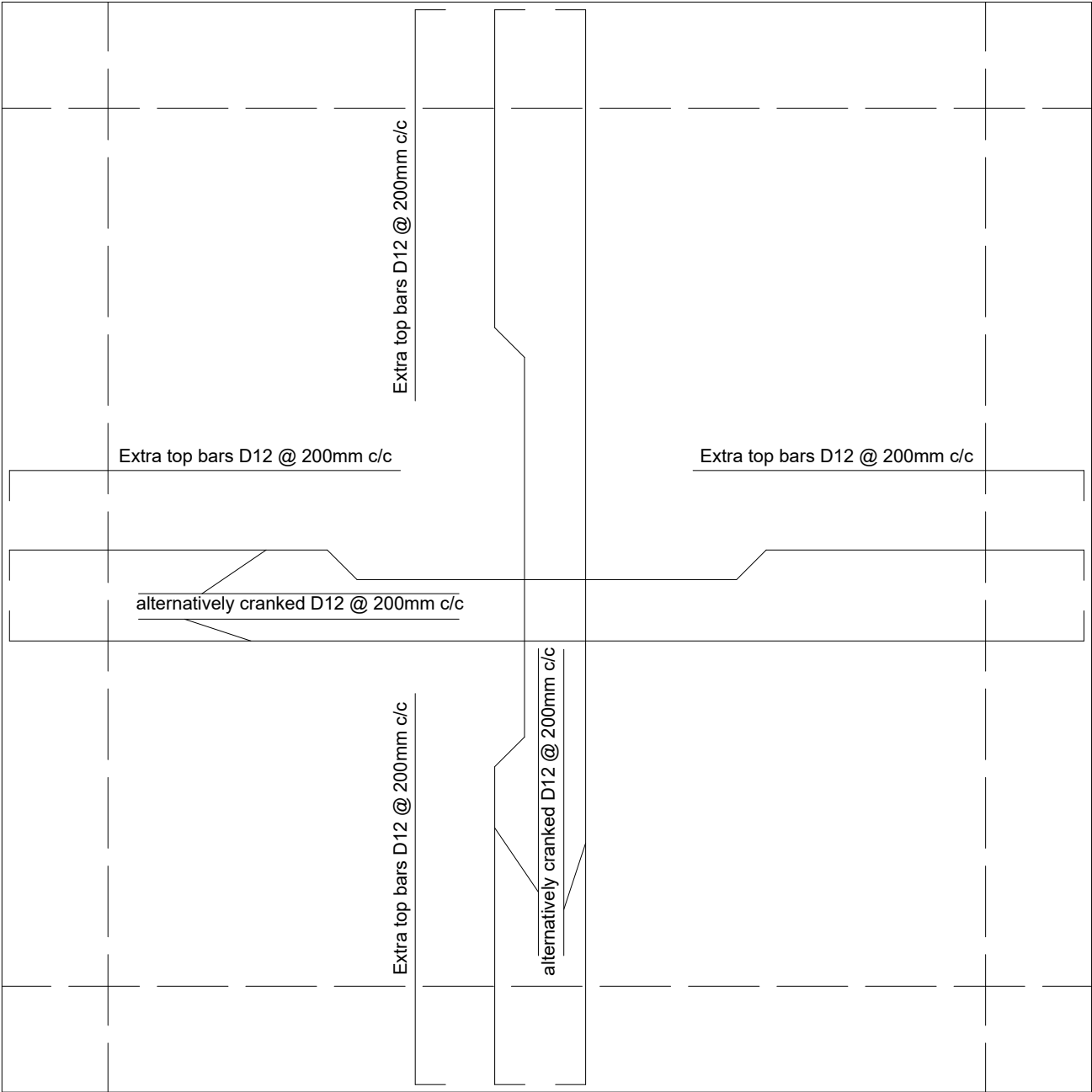


| | |
|----------|--|
| PROVINCE | |
| DISTRICT | |
| VILLAGE | |

PROJECT NAME
17.3 Cubic meter RC Elevated
Water Storage Powered by PV Panels

Ground Floor Slab Reinforcement

1st Floor Slab Reinforcement



Organization for Research
and Community
Development Global

| | |
|-------------|------------------------|
| Designed by | Engineering Department |
| REVIEWED BY | Engineering Department |
| APPROVED BY | Engineering Department |

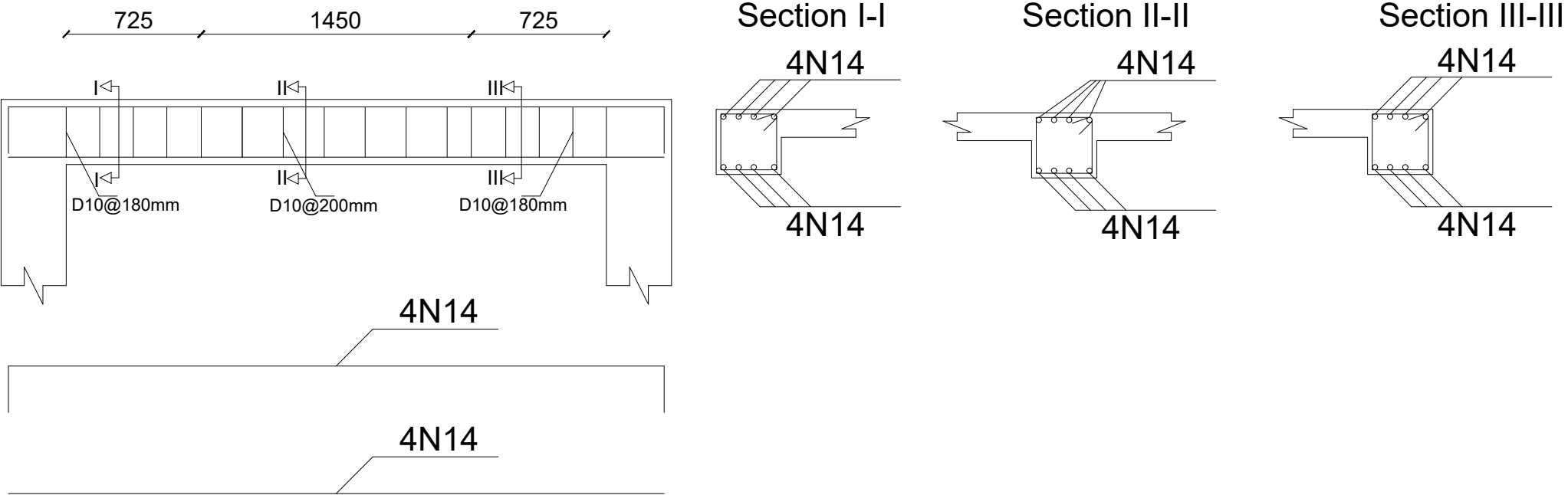
| | |
|-------|-----------|
| SCALE | As Shown |
| DATE | Aug. 2022 |
| | |

| | |
|----------|---|
| SHEET NO | 6 |
| | 8 |

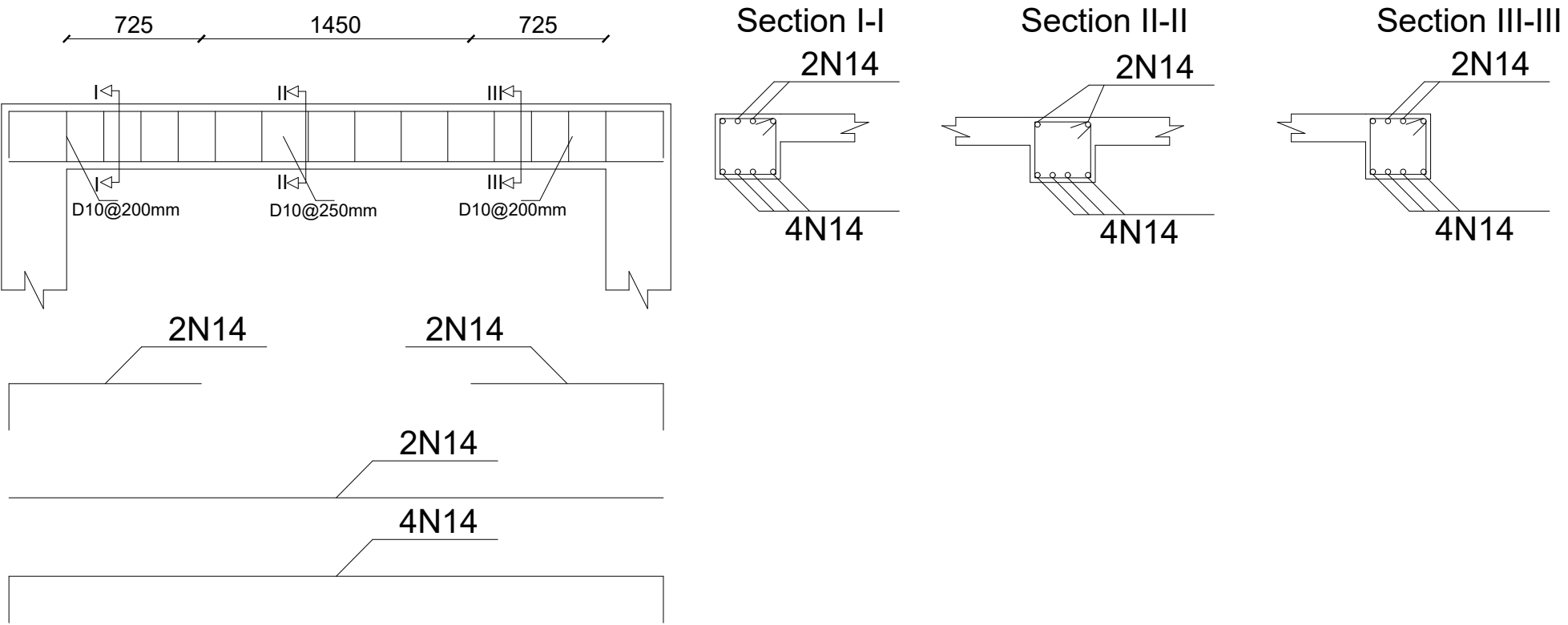
| | |
|----------|--|
| PROVINCE | |
| DISTRICT | |
| VILLAGE | |

| |
|--|
| PROJECT NAME |
| 17.3 Cubic meter RC Elevated Water Storage Powered by PV Panels |

Ground Floor Beam Reinforcement



1st Floor Beam Reinforcement



Organization for Research
and Community
Development Global

| | |
|-------------|------------------------|
| Designed by | Engineering Department |
| REVIEWED BY | Engineering Department |
| APPROVED BY | Engineering Department |

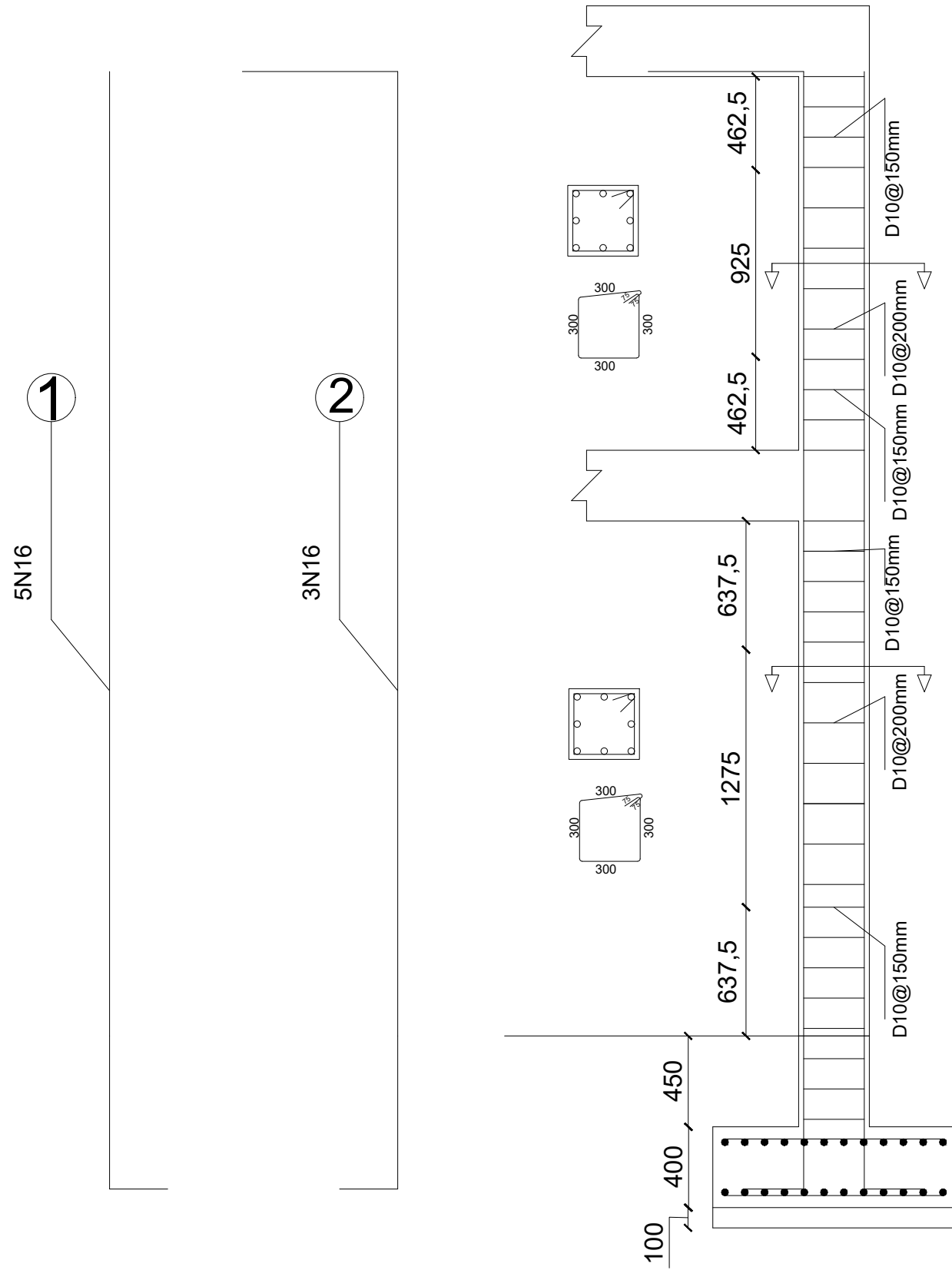
| | |
|-------|-----------|
| SCALE | As Shown |
| DATE | Aug. 2022 |

| | |
|----------|---|
| SHEET NO | 7 |
| | 8 |

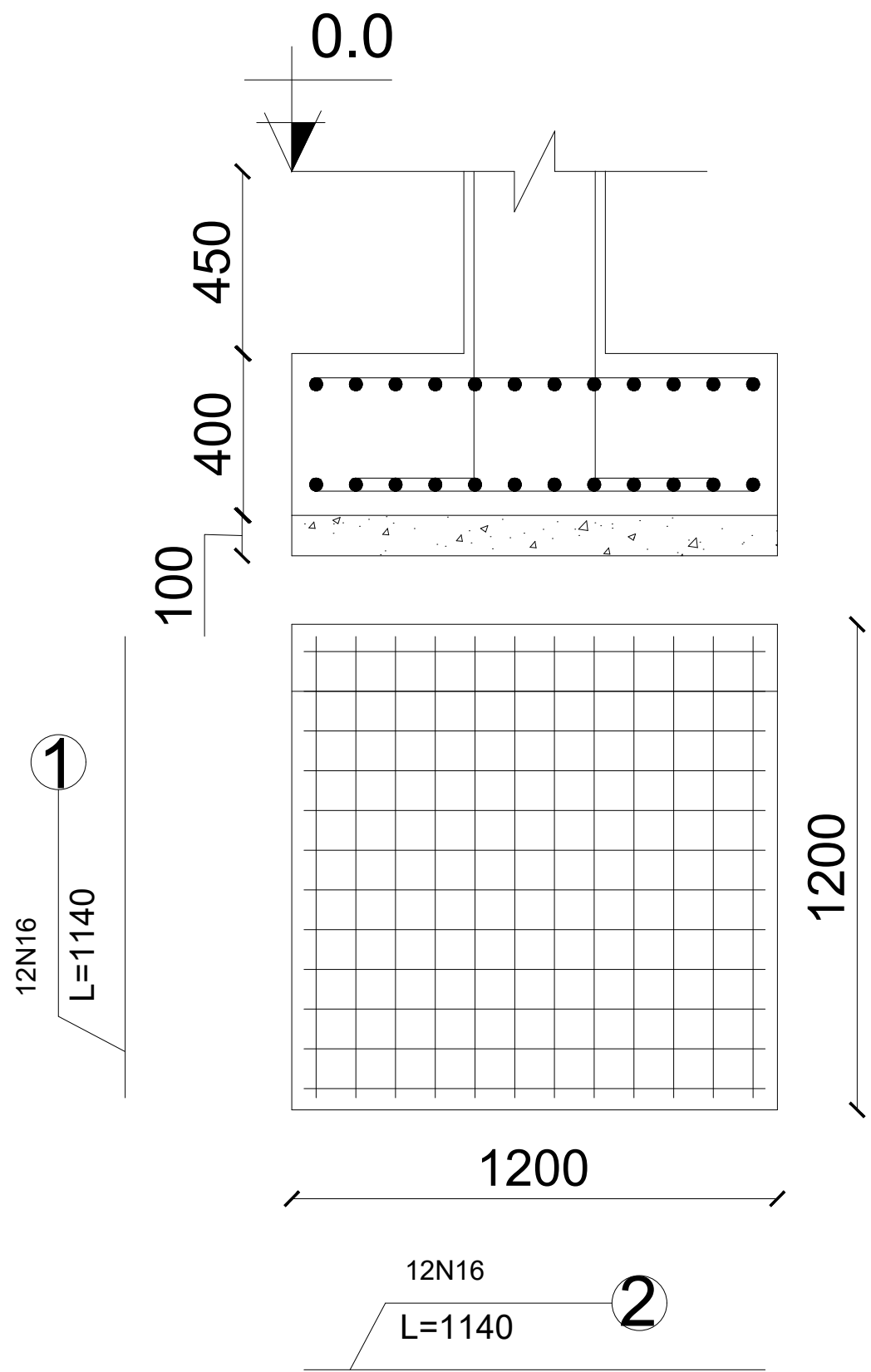
| | |
|----------|--|
| PROVINCE | |
| DISTRICT | |
| VILLAGE | |

PROJECT NAME
17.3 Cubic meter RC Elevated
Water Storage Powered by PV Panels

Column Reinforcement



Foundation Reinforcement



Organization for Research
and Community
Development Global

| | |
|-------------|------------------------|
| Designed by | Engineering Department |
| REVIEWED BY | Engineering Department |
| APPROVED BY | Engineering Department |

| | |
|-------|-----------|
| SCALE | As Shown |
| DATE | Aug. 2022 |

| | |
|----------|---|
| SHEET NO | 8 |
|----------|---|

| | |
|----------|--|
| PROVINCE | |
| DISTRICT | |
| VILLAGE | |

| |
|--|
| PROJECT NAME |
| 17.3 Cubic meter RC Elevated Water Storage Powered by PV Panels |